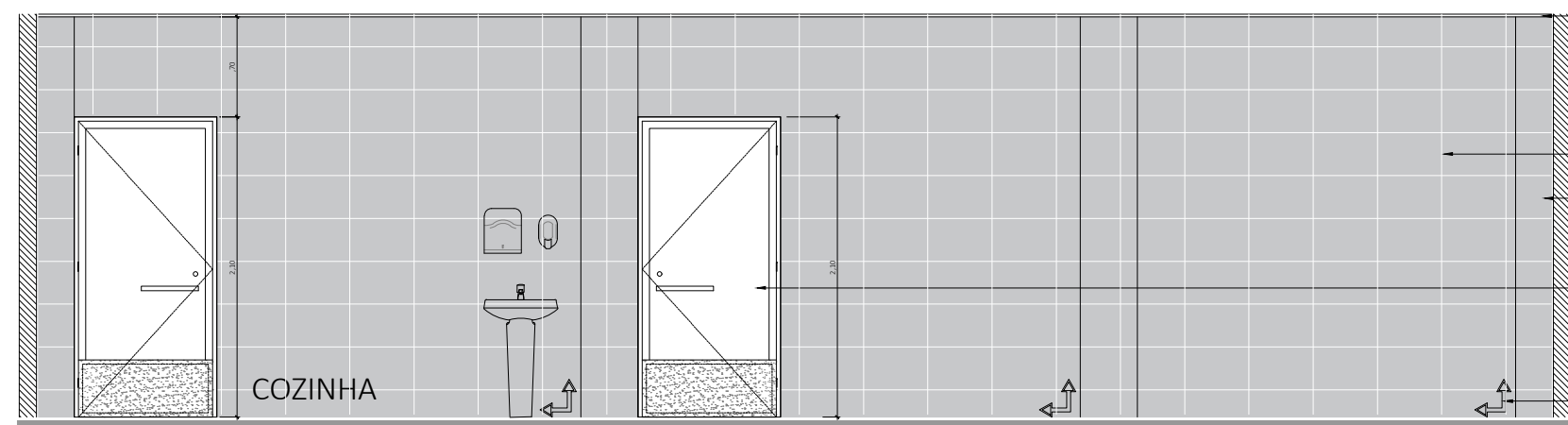
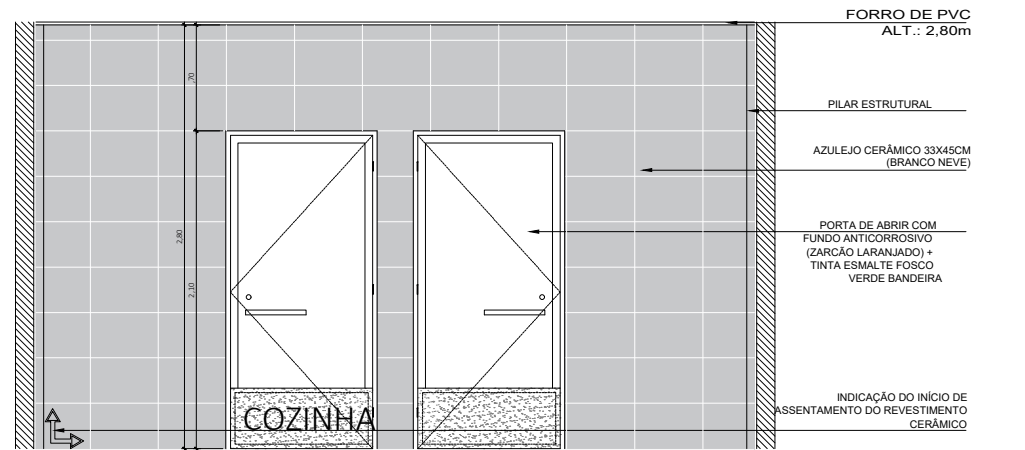


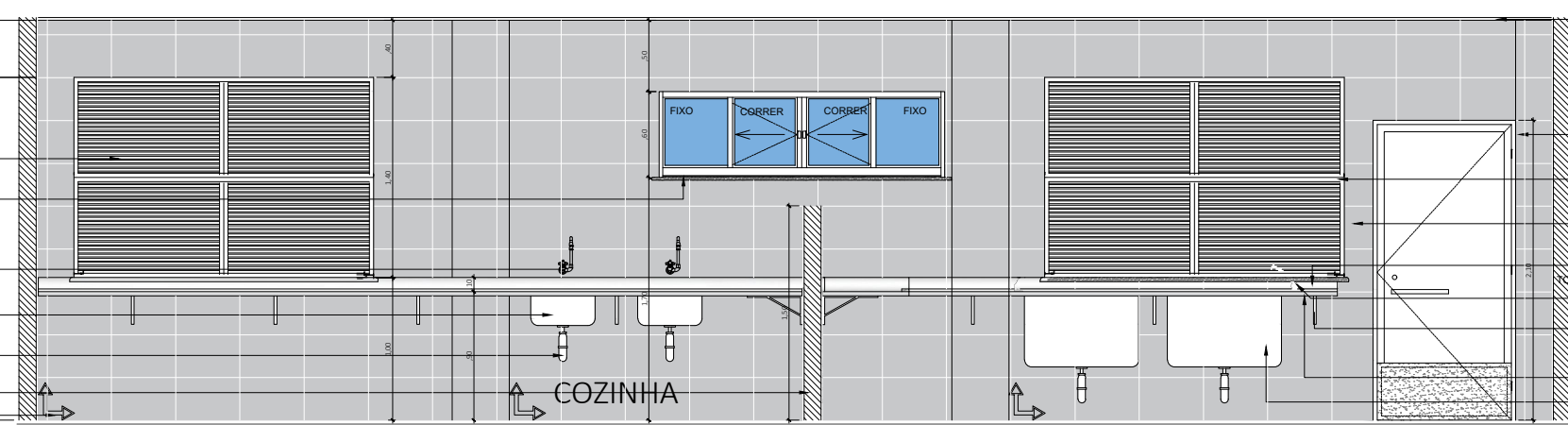
1- VISTA 4
Esc: 1/50



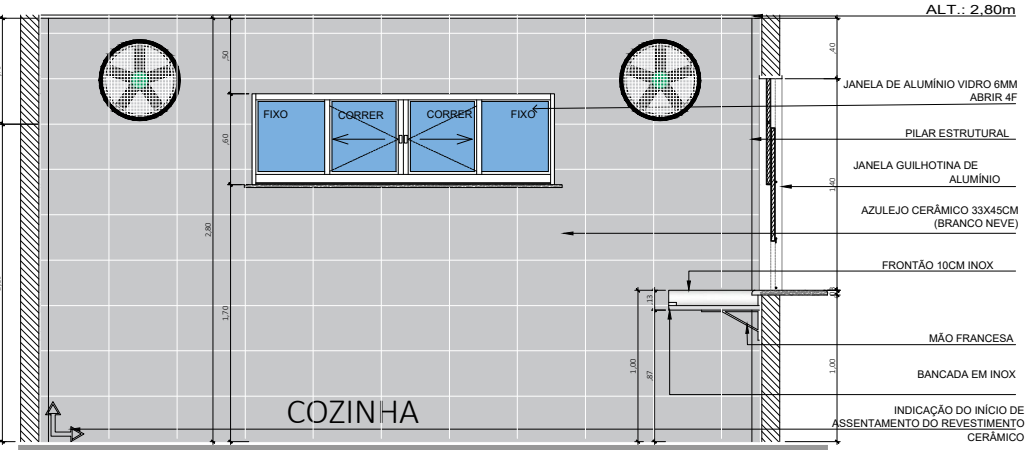
2- VISTA 1
Esc: 1/50



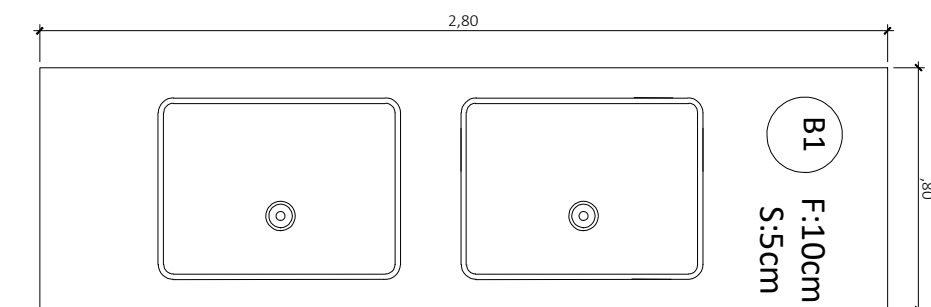
3- VISTA 2
Esc: 1/50



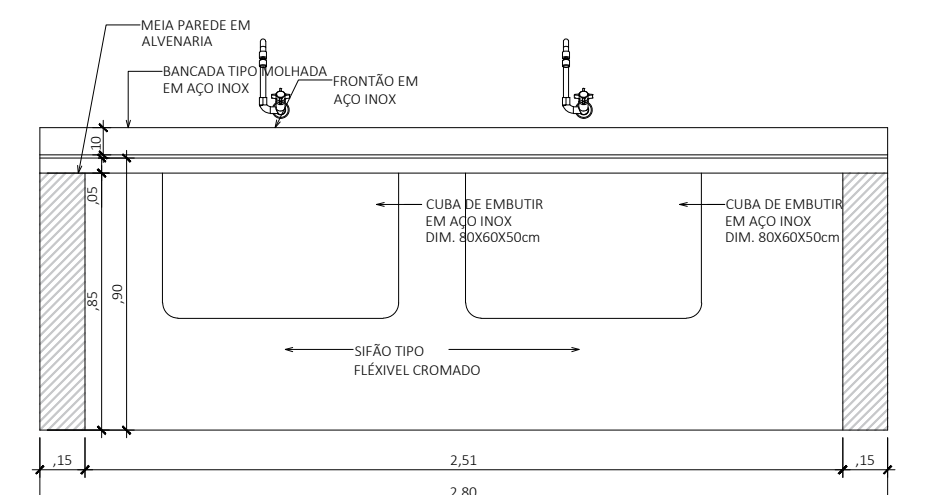
4- VISTA 4
Esc: 1/50



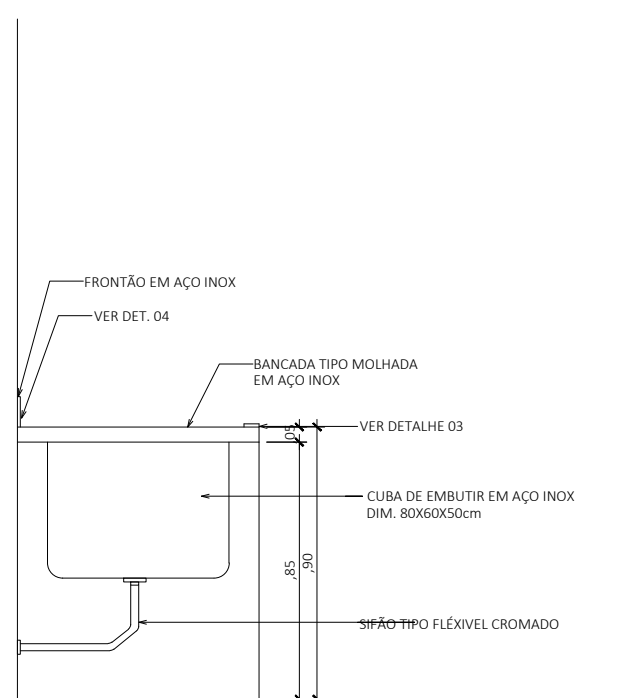
1- VISTA 3
Esc: 1/50



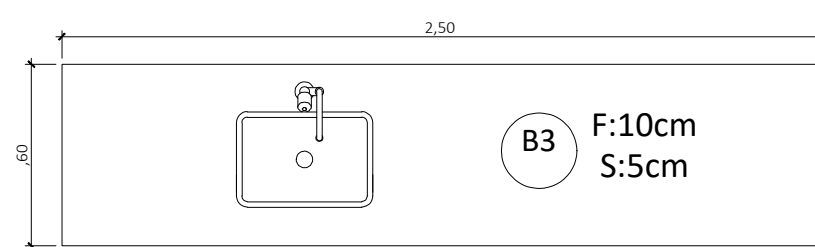
B1- PLANTA BAIXA
1/25



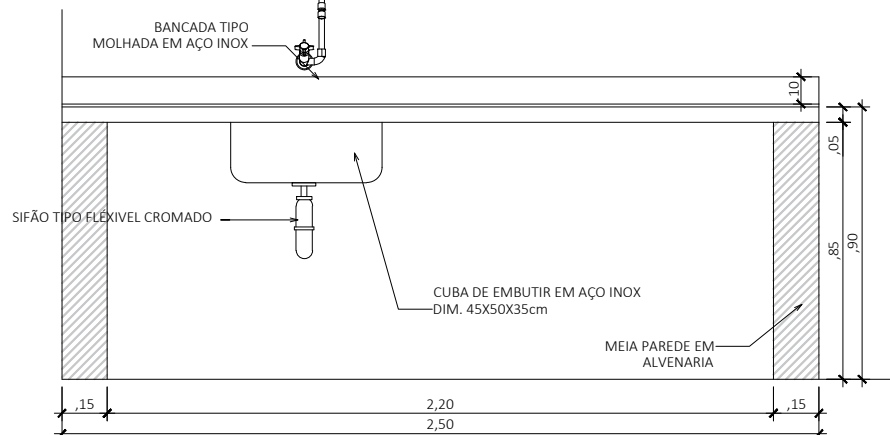
B1- VISTA FRONTAL
1/25



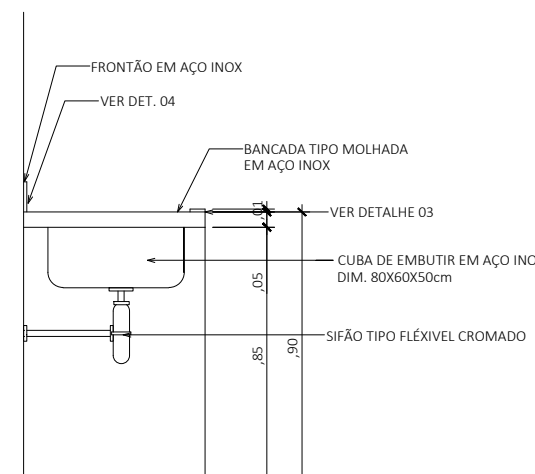
B1- VISTA LATERAL
1/25



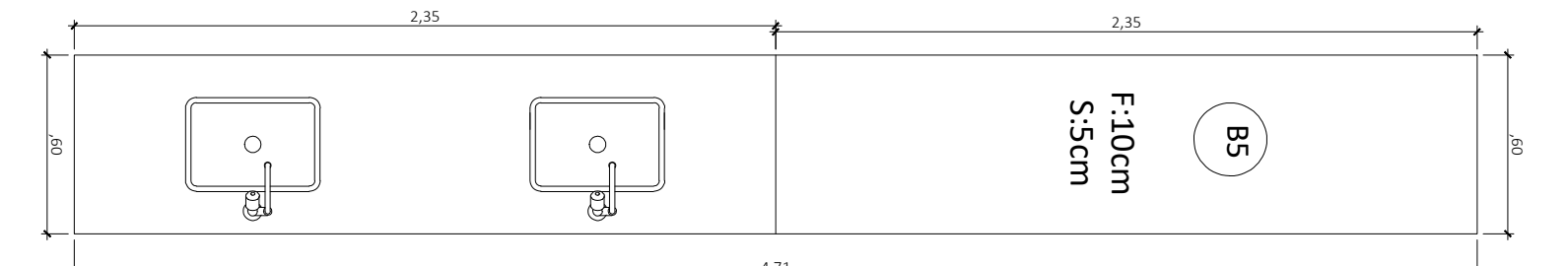
B3- PLANTA BAIXA
1/25



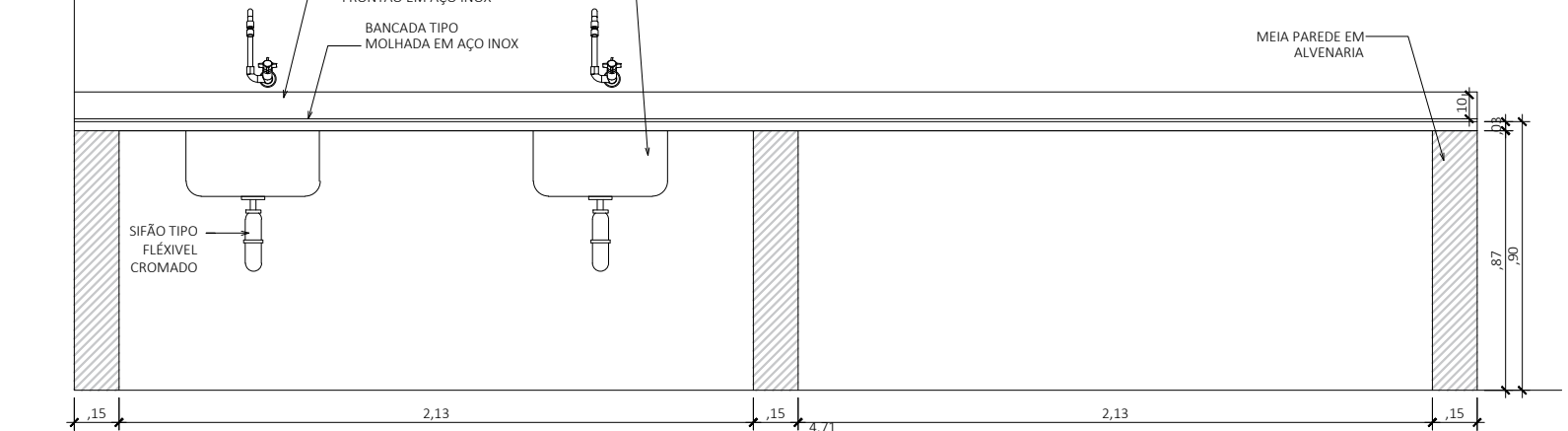
B3- VISTA FRONTAL
1/25



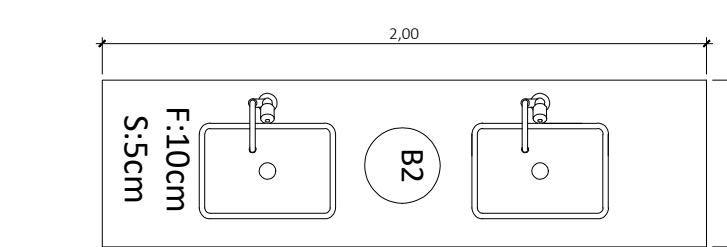
B3- VISTA LATERAL
1/25



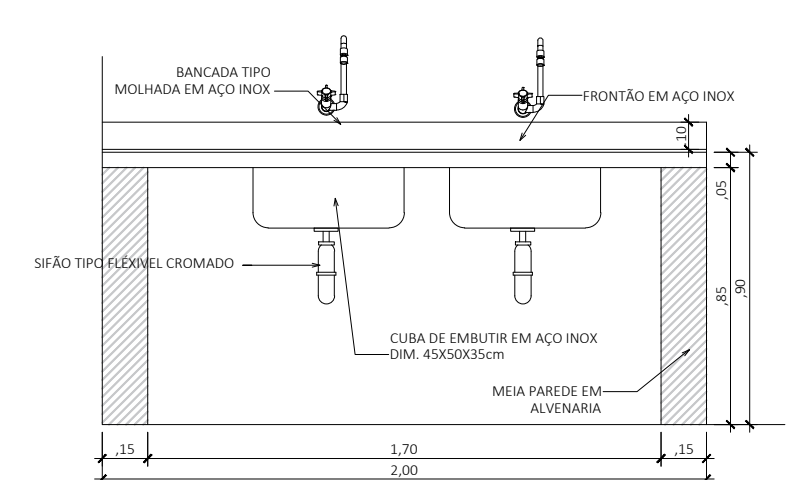
B5- PLANTA BAIXA
1/25



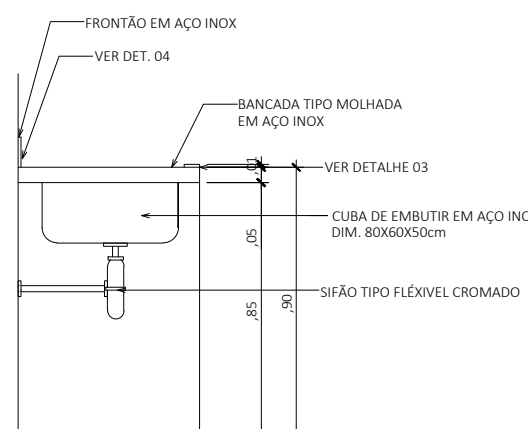
B5- VISTA FRONTAL
1/25



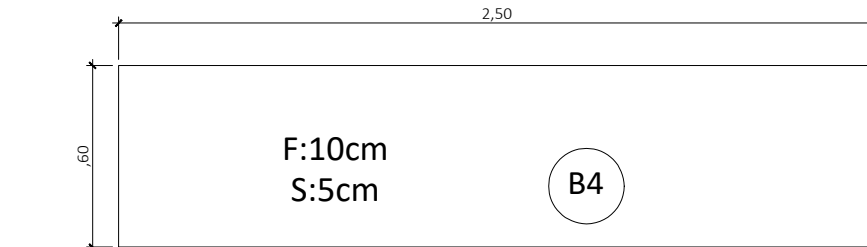
B2- PLANTA BAIXA
1/25



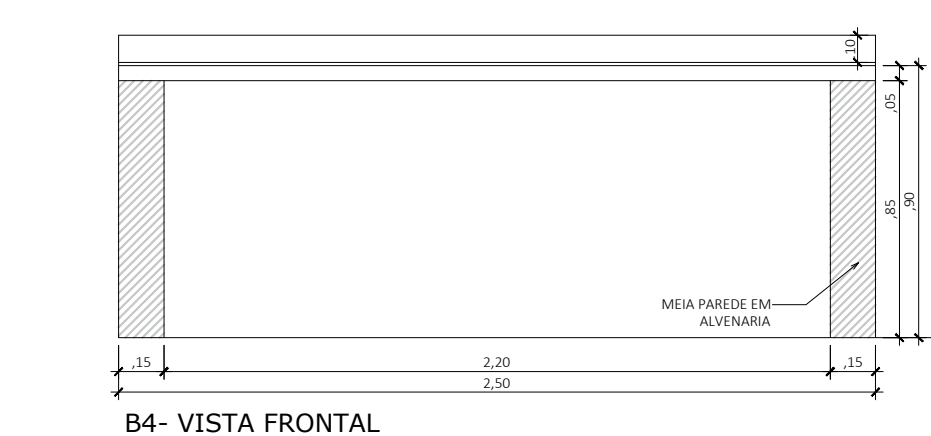
B2- VISTA FRONTAL
1/25



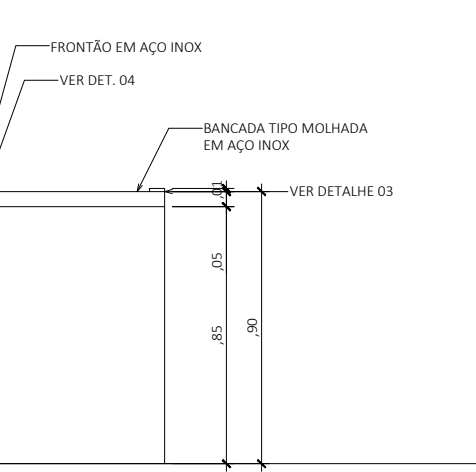
B2- VISTA LATERAL
1/25



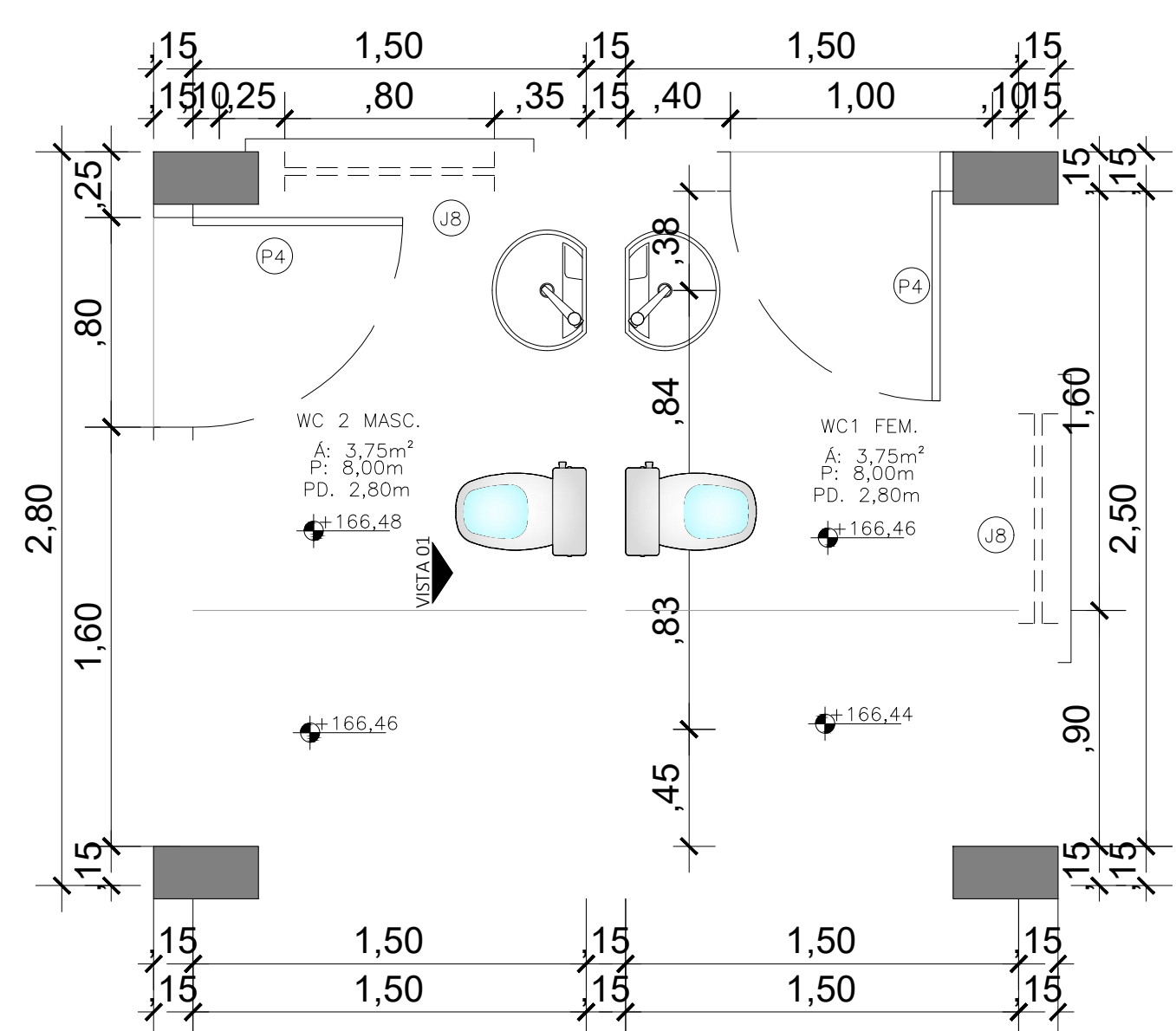
B4- PLANTA BAIXA
1/25



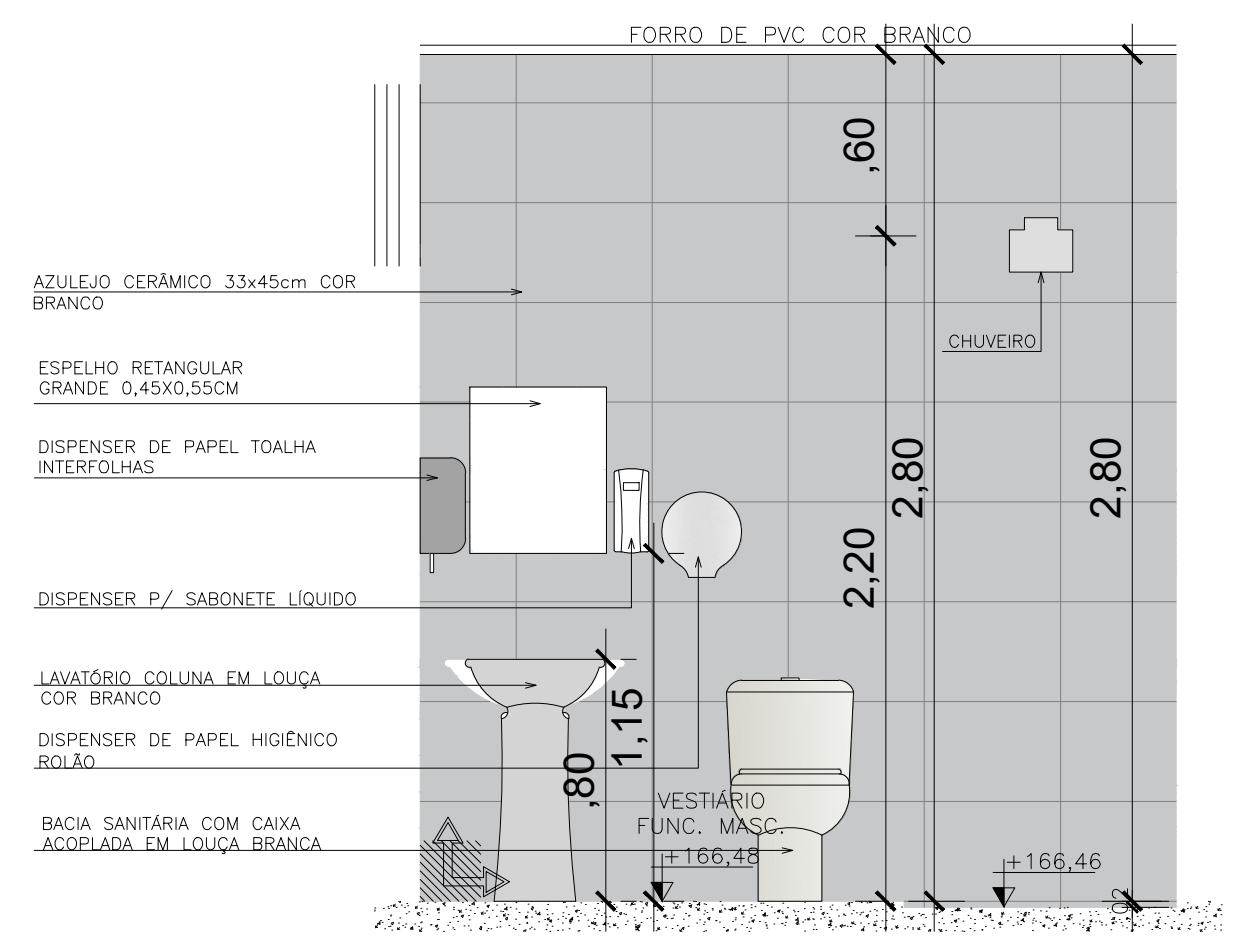
B4- VISTA FRONTAL
1/25



B4- VISTA LATERAL
1/25



DETALHE DE ÁREAS MOLHADAS DO REFEITÓRIO
VESTIÁRIO DE FUNCIONÁRIOS - PLANTA BAIXA
Escala: 1/25



DETALHE DE ÁREAS MOLHADAS DO REFEITÓRIO
VESTIÁRIO DE FUNCIONÁRIOS MASCULINO - VISTA 1
Escala: 1/25

R00	DDIMIAA	EMISSIONAL	DESCRICO
REVISAO	DATA		

PROJETO ARQUITETONICO			
OBRA:	EDUCACIONAL ESCOLA ESTADUAL NOVA		
PROPRIETARIO:	PREFEITURA MUNICIPAL DE CHAPADAS DOS GUIMARAES -MT		
CPF/ CNPJ:	03507530/0001-19		
ENDEREÇO:	AVENIDA ARICA, CEP: 78195-00 CHAPADA DOS GUIMARAES -MT		
AUTOR DO PROJETO:	ENGª PATRICIA CARVALHO MILHOMEM DE ABREU		
CREA/ CAU:	MT047574		
RESP. P/ EXECUÇÃO:	CREA/ CAU:		
ESCALA:	ASSUNTO:	FOLHA Nº:	
1/50	BLOCO REFEITÓRIO	ARQ	
	DETALHAMENTO DE BANCADAS	13/	
	DETALHAMENTO DE ÁREAS MOLHADAS	05	

NOME DO ARQUIVO DIGITAL: REFEITÓRIO DETALHES.dwg